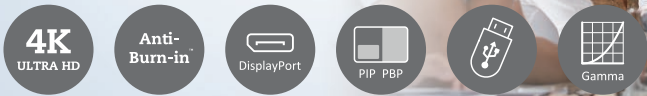


QD-Series

LED-backlit Display 75" | 84" | 98"

**Size Matters:
See The Big Picture in 4K**



The QD-Series are big. 4K UHD (3840 x 2160) resolution helps them make a big difference: rendering the finest details, replacing videowalls, and handling ultra-demanding graphic applications. Coming with durable metal housing and easily shifting between portrait and landscape modes, the QD-Series make a fitting choice for digital signage and videowalls of all specifications tailored to user needs.





60Hz



120Hz

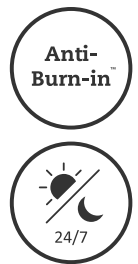
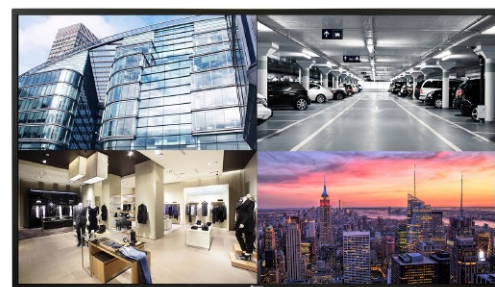
Unparalleled Visual Quality

The high brightness, high contrast ratio, and black-level alignment deliver an impeccable visual experience. Built on IPS panel with 4 times FHD resolution, the QD-Series render exquisite video quality with motion blur reduction at a refresh rate of up to 120Hz*.

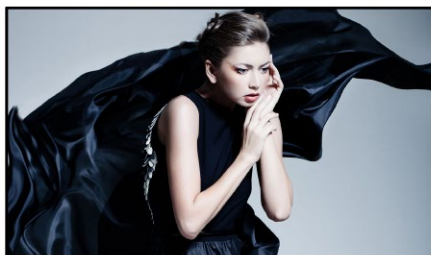
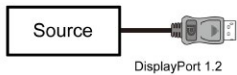
* 120Hz refresh rate supported by QD-84 & QD-98 models only

High Reliability

The QD-Series are crafted specifically to transcend the challenge of enduring 24/7 operations. AG Neovo's Anti-Burn-in™ technology also spares them ghosting while performing mission-critical nonstop operations. Metal casing and rigorously selected components not only help do the trick but also keep maintenance easy.



4K UHD @ 60 Hz



Easy to Display

The tiling-ready QD-Series can either stand alone replacing videowall set-ups or be arrayed in configurations of up to 10 x 15 videowalls. The QD-Series can also deliver 4K at 60 Hz by single DisplayPort 1.2 cable for the best visual quality.

Multi-Screen Viewer

The Picture by Picture (PbP) function and up to four inputs mean it is possible to present multiple FHD screens for different operations in one display. With the multi-screen viewing capacity, the QD-Series become a sensible option for control centres, meeting rooms, and other public settings.



Features

- 4K UHD 3840 x 2160 resolution
- Anti-Burn-in™ technology prevents image ghosting
- DisplayPort 1.2 Multistream functionality allows for 4K UHD resolution across a 2x2 video wall
- PiP/PbP functions enable multi-source viewing simultaneously
- Image Enhancer: Deinterlace / Noise Reduction
- Versatile connectivity: HDMI, DisplayPort, VGA, DVI, CVBS, Component
- Daisy chain availability: DisplayPort, RS-232 and IR
- IR looping allows easy control via remote controller

- Built-in USB media player for simple signage content delivery
- HeatControl Sensors automatically activate the internal cooling fans when temperature rises
- OPS slot ready for easy media player integration
- Black-level adjustment for presenting more details in dark images
- Selectable gamma curves optimise different kinds of images
- Premium-grade panel for high reliability and long product lifetime
- Rigorous screening of the components for mission-critical 24/7 applications



Specifications

QD-98

QD-84

QD-75

Panel	Panel Type	LED-Backlit TFT LCD (IPS Technology)	LED-Backlit TFT LCD (IPS Technology)	LED-Backlit TFT LCD (IPS Technology)
	Panel Size	97.5"	84.0"	74.5"
	Max. Resolution	UHD 3840 x 2160	UHD 3840 x 2160	UHD 3840 x 2160
	Pixel Pitch	0.562 mm	0.485 mm	0.429 mm
	Brightness	500 cd/m ²	500 cd/m ²	410 cd/m ²
	Contrast Ratio	1300:1	1400:1	1200:1
	Viewing Angle (H/V)	178°/178°	178°/178°	178°/178°
	Disply Colour	1.07B	1.07B	1.07B
	Response Time	5 ms	5 ms	5 ms
	Surface Treatment	Anti-Glare Treatment (Haze 1%), 3H Hard Coating	Anti-Glare Treatment (Haze 10%), 3H Hard Coating	Anti-Glare Treatment (Haze 3%), 2H Hard Coating
Frequency (H/V)	H Freq. V Freq.	31 kHz-92 kHz 48 Hz-85 Hz	31 kHz-92 kHz 48 Hz-85 Hz	31 kHz-92 kHz 48 Hz-85 Hz
Input	DisplayPort HDMI DVI VGA Component Composite	1.2 x 1 2.0 x 3 24-Pin DVI-D x 1 15-Pin D-Sub x 1 RCA x 1 RCA x 1 (Share with Component-Y)	1.2 x 1 2.0 x 3 24-Pin DVI-D x 1 15-Pin D-Sub x 1 RCA x 1 RCA x 1 (Share with Component-Y)	1.2 x 1 2.0 x 3 24-Pin DVI-D x 1 15-Pin D-Sub x 1 RCA x 1 RCA x 1 (Share with Component-Y)
Output	DisplayPort	1.2 x 1	1.2 x 1	1.2 x 1
External Control	IR in/out RS232 in/out LAN (RJ45)	3.5 mm Phone Jack 2.5 mm Phone Jack Yes	3.5 mm Phone Jack 2.5 mm Phone Jack Yes	3.5 mm Phone Jack 2.5 mm Phone Jack Yes
Other Connectivity	USB OPS Slot	2.0 x 1 (Service Port / Media Playback) Yes	2.0 x 1 (Service Port) / 2.0 X 1 (Media Playback) Yes	2.0 x 1 (Service Port / Media Playback) Yes
Audio	Audio In Audio Out Internal Speakers Speaker Output (RMS)	Stereo Audio Jack (3.5 mm) Stereo Audio Jack (RCA) Stereo Audio Jack (3.5 mm) S/PDIF 10W x 2 10W x 2	Stereo Audio Jack (3.5 mm) Stereo Audio Jack (RCA) Stereo Audio Jack (3.5 mm) S/PDIF 10W x 2 10W x 2	Stereo Audio Jack (3.5 mm) Stereo Audio Jack (RCA) Stereo Audio Jack (3.5 mm) S/PDIF 10W x 2 10W x 2
Power	Power Supply Power Requirements On Mode Stand-by Mode Off Mode	Internal AC 100-240V, 50/60 Hz 314W (On) < 0.5W < 0.5W	Internal AC 100-240V, 50/60 Hz 389W (On) < 0.5W < 0.5W	Internal AC 100-240V, 50/60 Hz 197W (On) < 0.5W < 0.5W
Operating Conditions	Temperature Humidity	5°C-40°C (41°F-104°F) 20%-80% (non-condensing)	5°C-40°C (41°F-104°F) 20%-80% (non-condensing)	5°C-40°C (41°F-104°F) 20%-80% (non-condensing)
Storage Conditions	Temperature Humidity	-20°C-60°C (-4°F-140°F) 5%-95% (non-condensing)	-20°C-60°C (-4°F-140°F) 10%-90% (non-condensing)	-20°C-60°C (-4°F-140°F) 10%-90% (non-condensing)
Mounting	VESA FPMPI	Yes (800 x 500 mm)	Yes (600 x 500 mm)	Yes (600 x 400 mm)
Dimensions	w/o Base (W x H x D) Packaging (W x H x D)	2193.2 x 1248.2 x 89.8 mm (86.4" x 49.1" x 3.5") 2503.0 x 1569.0 x 450.0 mm (98.5" x 61.8" x 17.7")	1910.0 x 1102.0 x 77.8 mm (75.2" x 43.4" x 3.1") 2205.0 x 1429.0 x 474.0 mm (86.8" x 56.3" x 18.7")	1676.6 x 955.0 x 73.8 mm (66.0" x 37.6" x 2.9") 1832.0 x 1283.0 x 280.0 mm (72.1" x 50.5" x 11.0")
Weight	w/o base Packaging	92.0 kg (202.6 lb) 126.8 kg (279.4 lb)	70.0 kg (154.3 lb) 102.5.0 kg (226.0 lb)	53.3 kg (117.3 lb) 65.5.0 kg (144.1 lb)
Regulation Approval	Certifications & Compliance	CE, CB, WEEE, RoHS, REACH, EAC	CE, CB, BSMI, WEEE, RoHS, REACH, EAC	CE, CB, WEEE, RoHS, REACH, EAC
Accessories	Supplied	Power Adaptor, Power Cord, VGA Cable, Audio Cable, Quick Start Guide, Warranty Card	Power Cord, VGA Cable, RS232 Cable, Remote Control, Batteries, RS232 Daisy Chain Cable, CD	Power Adaptor, Power Cord, VGA Cable, Audio Cable, Quick Start Guide, Warranty Card
Optional Accessories		Wall Mount: PMK-01 Desk Mounts: DMC-01, DMC-02D, DMS-01D, DMS-01Q, ES-02 Handle: HDL-02 Ceiling Mount (Landscape only): CMP-01 + WMK-03 Wall Mounts (Landscape only): WMA-01, WMK-01, WMK-03	Wall Mount (Landscape only): LMK-03 Floor Mount (Landscape only): FMC-03 + LMK-04, FMC-04 + LMK-04	Wall Mount: PMK-01 Desk Mounts: DMC-01, DMC-02D, DMS-01D, DMS-01Q, ES-02 Handle: HDL-01 Ceiling Mount (Landscape only): CMP-01 + WMK-03 Wall Mounts (Landscape only): WMA-01, WMK-01, WMK-03

Global Headquarters

Taipei, Taiwan

EMEA Regional Headquarters

Capelle a/d IJssel, The Netherlands

North & South America Regional Headquarters

San Jose, CA, U.S.A.

Asia-Pacific Regional Headquarters

Taipei, Taiwan

Canada Sales Office

Vancouver, B.C., Canada

China Sales Office

Shanghai, China

Czech Republic Sales Office

Brno, Czech Republic

Denmark Sales Office

Stoevring, Denmark

Germany Sales Office

Mechernich, Germany

Italy Sales Office

Livorno, Italy

Poland Sales Office

Warsaw, Poland

Spain Sales Office

Barcelona, Spain

Ukraine Sales Office

Lviv, Ukraine

displays.agneovo.com